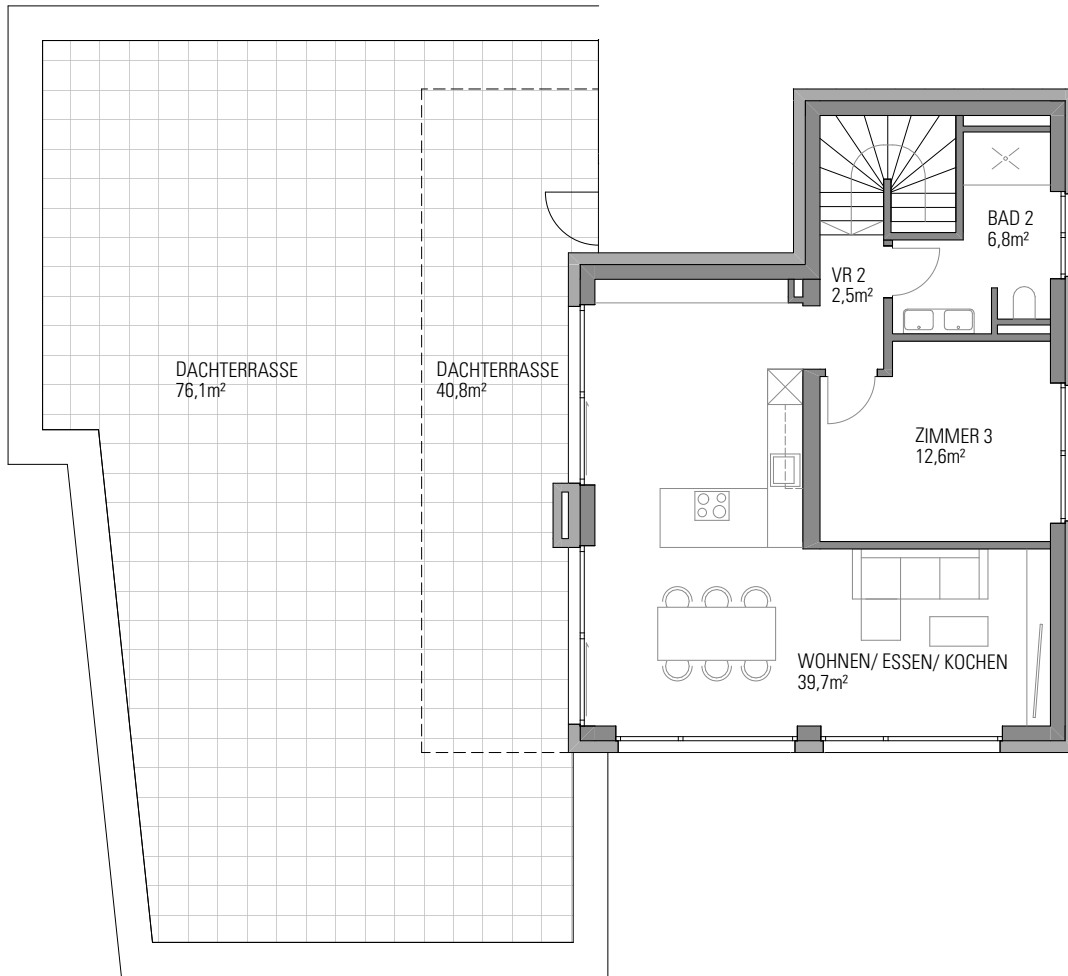
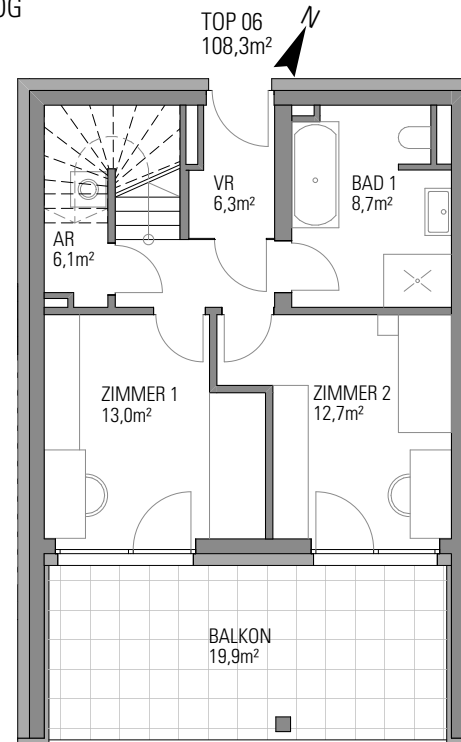


# TOP 06



3.OG 2.OG



TOP 06  
108,3m<sup>2</sup>

## 2.OG + 3.OG

Zimmer	4
Wohnfläche	108,3 m <sup>2</sup>
Balkon	19,9 m <sup>2</sup>
Dachterrasse	116,9 m <sup>2</sup>
Keller	7 m <sup>2</sup>